

CASSIA

THE FIELDS

MOHAMMED BIN RASHID
AL MAKTUM CITY



REAL ESTATE

STAY AHEAD, INVEST SMART



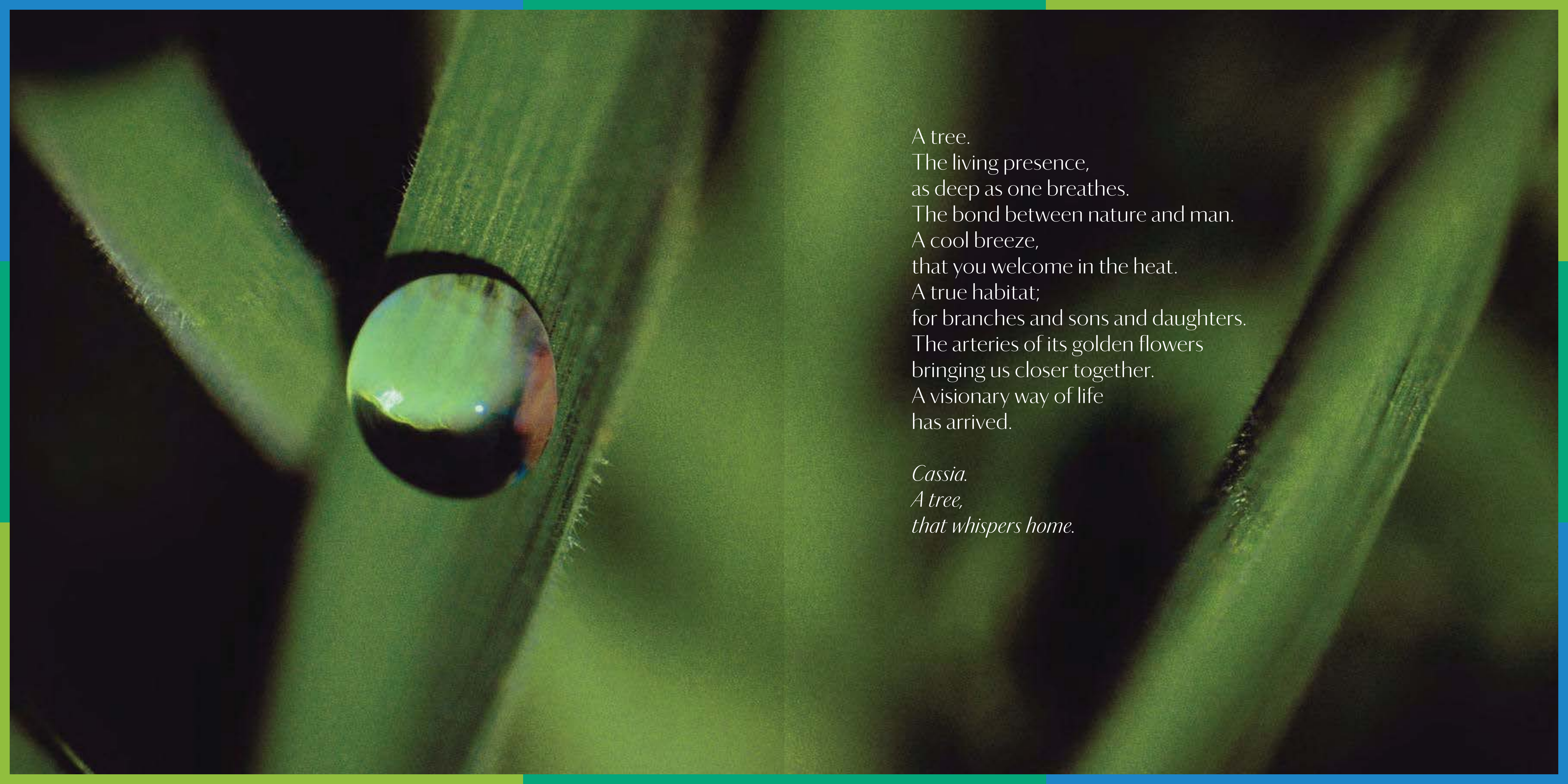
DUBRICKS

POSSIBILITIES ARE LIMITLESS

CASSIA

AT
THE FIELDS

MOHAMMED BIN RASHID
AL MAKTOUM CITY



A tree.
The living presence,
as deep as one breathes.
The bond between nature and man.
A cool breeze,
that you welcome in the heat.
A true habitat;
for branches and sons and daughters.
The arteries of its golden flowers
bringing us closer together.
A visionary way of life
has arrived.

Cassia.
A tree,
that whispers home.

OWN THE HORIZON

INDEX

The Fields



12

MBR City



20

Greater Neighborhood



26

Cassia



34

Design



44

Interiors



50

Floorplans



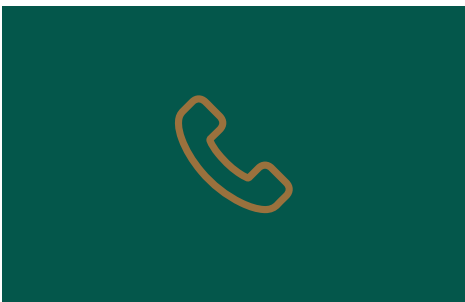
58

Team



64

Connect



68

CASSIA. A NEW BEGINNING.

INSPIRED BY THE SERENITY OF
NATURE, CASSIA IS A STYLISH SET
OF TOWNHOUSES THAT REDEFINE
MODERN LUXURY LIVING IN DUBAI.

10



Part of the all-new The Fields master-plan development, Cassia promises to be the city's premier residential opportunity for families as well as investors.

Featuring innovative architectural design, first-class amenities and abundant green spaces, this ideally located sub-community is a gem – secluded enough to offer families a perfect place of rest while boasting seamless access to near-by communities and amenities as well as to Dubai's main arteries.

Cassia is the latest addition to an exciting community. These highly sought-after residences offer the best of both worlds: complete privacy and serene living near all of the hustle and bustle of one of the world's most extraordinary cities and all it has to offer.



THE FIRST AND LAST PLACE YOU'LL EVER WANT TO LIVE.

Cassia is a dazzling branch of The Fields' master plan development. The Fields (District 11) forms an integral part of Mohammad Bin Rashid Al Maktoum (MBR) City, which is Dubai's newest and most thrilling development to date – a grandiose project that has transformed an idea into a location whose size and ambition has few equals.

THESE ARE FIRST IMPRESSIONS
THAT LAST A LIFETIME.

AN UNPARALLELED EXPERIENCE
THAT LEAVES A LASTING IMPRESSION.
ECHOING THROUGH TIME.



A LIFESTYLE THAT CREATES BONDS.

A new frontier in living, the live-work-play model has never been more seamless, and rewarding. Residents and their families will find expansive parks, innovative boutiques and retailers, and top-notch schools together with the best shopping, dining and entertainment.



Enjoy a peaceful after-work stroll along the tree-lined boulevards that connect the communities, or take a yoga session in the park. At The Clubhouse, residents can relax with a newspaper or catch up over a frothy cappuccino. There's also an outdoor cinema for adults and children, as well as plenty of gourmet restaurants and family-friendly cafes.

Beautifully designed communal spaces offer residents opportunities to socialize with neighbors or friends.



A bright outdoor playground stimulates children's imagination and teaches them new learning skills. Spacious shared parks are an ideal place to spend quality family time: take a picnic under the shade of a tree, or play a game of football with your kids.

Understanding the vital role education plays in shaping the future, the developers have included plans for two top schools within The Fields. Kent College and School is set to break boundaries with outstanding education opportunities for all young residents of The Fields.



A CITY'S VISION, BROUGHT TO LIFE.

Like nowhere else on earth, Mohammed Bin Rashid Al Maktoum City is Dubai's vision encapsulated in a new and ever-expanding master development. Crystal lagoons and sublime beaches, sweeping parklands and breath-taking architecture.



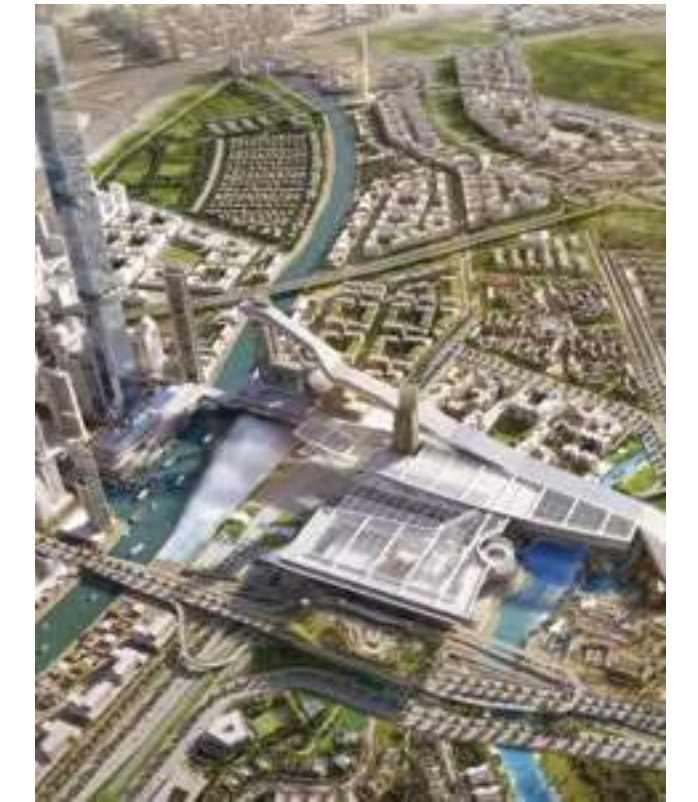
HAVE YOU EVER
LIVED IN THE MIDST
OF AMBITION?

EXCEPTIONAL BY NAME. EXCEPTIONAL BY NATURE.

THE RESULT OF PROGRESSION,
ENVISIONED IN A LIFESTYLE.



This visionary and lively new city-within-a-city promises an unrivalled luxury lifestyle. Residents will enjoy the space and tranquility to relish the important things in life, whilst still having the energy and excitement of a city right outside one's door. It's the best of both the worlds. A calm suburban location just minutes from the center of the city.



Mohammed Bin Rashid Al Maktoum City embraces all the best of contemporary living and redefines what exceptional can be.

THE FIELDS, AND BEYOND.

The lifestyle that embodies The Fields is bettered only by its surroundings and opportunities. No matter where you find yourself, you can take advantage of some of the world's most celebrated attractions, including leading sports facilities like the beautiful racecourses at Meydan; the globally-renowned golf courses at Badia Golf course, Dubai Creek Golf & Yacht as well as Greg Norman's Earth & Fire championship golf courses.



WHEN OPPORTUNITIES ARE YOUR NEIGHBORS.

LEISURE

- 1. Dubai Mall
- 2. Dubai Water Canal
- 3. IMG Worlds of Adventure
- 4. Ras Al Khor Wildlife Sanctuary
- 5. Palm Jumeirah
- 6. The World Islands
- 7. Global Village
- 8. Dubai Autodrome
- 9. Dubai International Stadium
- 10. Dubai Polo & Equestrian Club

ART & CULTURE

- 11. Dubai Opera
- 12. Dubai Design District
- 13. Middle East Museum of Modern Art
- 14. Museum of the Future

EDUCATION

- 15. The Kent College Dubai
- 16. Repton Academy
- 17. Academic City
- 18. GEMS Modern Academy

HOSPITALITY

- 19. The Farm Al Barari
- 20. Meydan Hotel
- 21. Palazzo Versace
- 22. Ritz Carlton DIFC
- 23. Armani Hotel
- 24. Four Seasons Jumeirah Beach

HEALTHCARE

- 25. Dubai Healthcare City
- 26. American Hospital Dubai
- 27. Saudi-German Hospital

COMMERCIAL

- 28. Business Bay
- 29. DIFC
- 30. DWTC
- 31. Dubai International Airport

PARKS

- 32. Zabeel Park
- 33. Safa Park
- 34. Dubai Miracle Garden

GOLF COURSES

- 35. Dubai Creek Golf & Yacht Club
- 36. Al Badia Golf Club
- 37. Emirates Golf Club
- 38. The Address Montgomerie
- 39. Arabian Ranches Golf Club
- 40. Jumeirah Golf Club

G&CO PROJECTS

- 41. Millenium Estates
- 42. Grand Views





Escape with an IMAX theatre, at the largest indoor ski slope in the world and the IMG World of Adventures – keeping both children and adults entertained with IMG Worlds of Adventure Theme Park, set to be the world’s largest indoor theme park. Offering an immersive experience in a temperature-controlled environment, the 1.5 million square-foot park has four themed zones which include Marvel, Cartoon Network, Lost Valley Dinosaur Adventure and IMG Boulevard.





If shopping is more to your liking, The Meydan One Mall is just minutes away as is direct access to the world's biggest malls, like The Dubai Mall – home to over 1200 retail stores and more than 200 food and drink outlets, the mall is home to a gigantic aquarium and Kidzania, an interactive mini-city that aims to entertain and teach children at the same time. An Olympic-sized ice-rink guarantees fun for all the family.

The new Dubai Water Canal is another exciting development in close proximity to Cassia and The Fields. Dotted around its tree-lined promenades are gourmet restaurants, boutiques, four first-class hotels and a shopping mall, as well as private marinas and a trade center. The canal's green walkways and cycle paths inspire a healthier and happier lifestyle.





CELEBRATE A TRUE SENSE OF COMMUNITY.

Live in the middle of it all. Cassia is at the heart of contemporary living, architecture, culture, fashion, dining, parks and beautiful sunsets, offering the best of Dubai, all in one place.

THE ESSENCE OF COMMUNITY. IN THE STYLE OF LIFE.

PEACE AND HARMONY,
AND A LIFE UNLIKE ANY OTHER.

36

Life is alluringly effortless for Cassia's residents. Purposefully designed to maintain the perfect balance between work, life and play, residents can enjoy everything within easy reach.

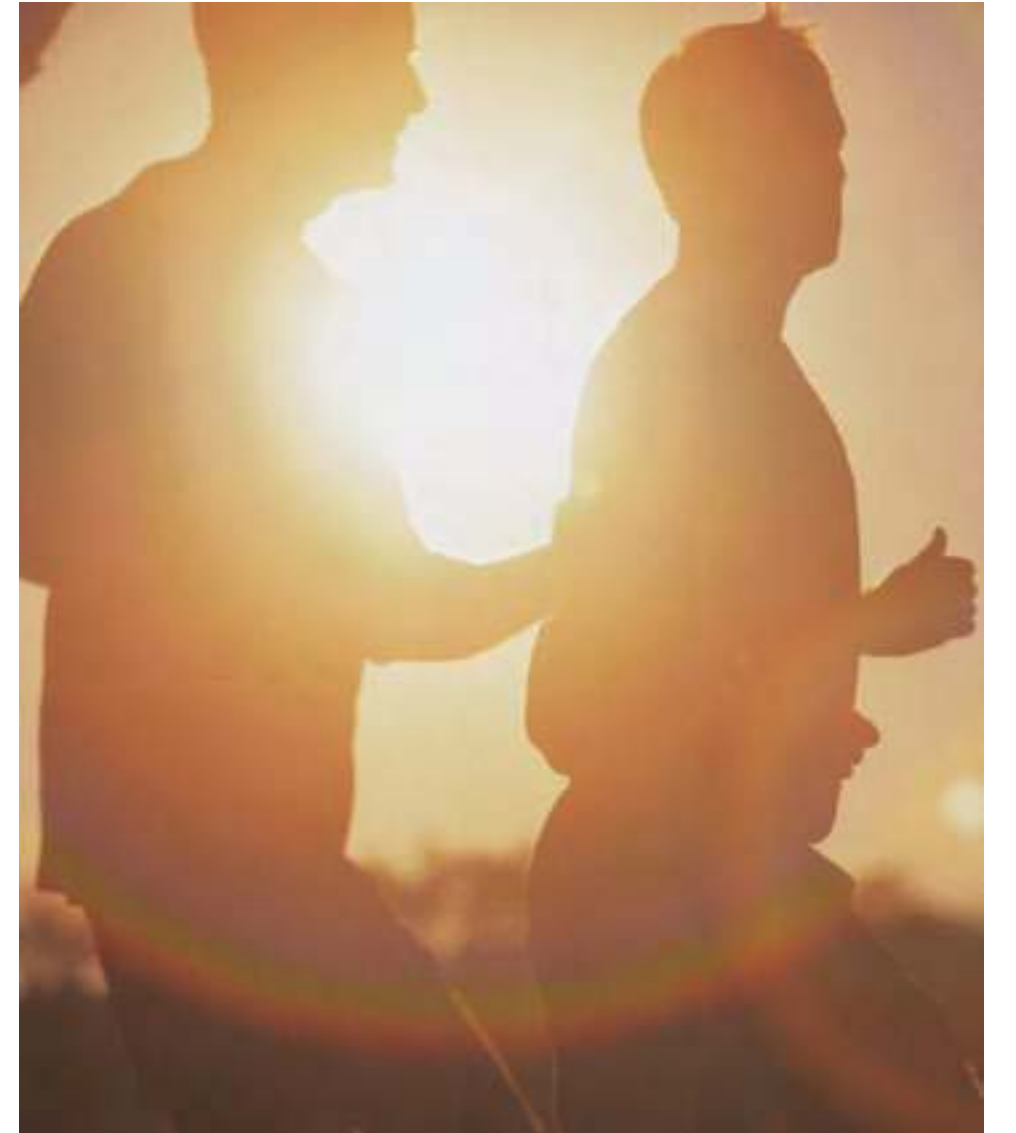
Every day ensures fresh living with parks, lawns, green corridors, recreational parks as well as landscaped walkaways... it's the perfect backdrop for luxury family living.







Within the master plan development are plenty of opportunities for outdoor activities intrinsic to maintaining a healthy lifestyle. Ride your bike along the network of safe cycle lanes or go for an early evening swim in the open-air pools.



This self-contained yet lively neighborhood has so much to offer from wide jogging tracks to lush green parks, from a mosaic of retail outlets to exhilarating entertainment zones, and from medical centers to education facilities. This is truly a place to live, a place to explore and a place to raise a family. A magnificent life in a captivating city.



Appreciate family gatherings in generously-sized living spaces within your 3- & 4-bedroom homes, enhanced by huge windows and glass sliding doors that spill out to a perfectly manicured garden with plenty of space for children to play.



In the spacious backyard, a barbecue area is designed to host weekend get-togethers, while a shaded decked terrace is the ideal spot to relax with a book, or catch up on emails.



AN ARCHITECTURAL MARVEL.

The sophisticated townhouses are built with the highest specification and each possess their own unique character that emanates harmony, peaceful living and privacy.

MAKING A HOME A MASTERPIECE.

INSPIRED BY NATURE, LET
CASSIA BECOME YOUR
NATURAL SURROUNDING.



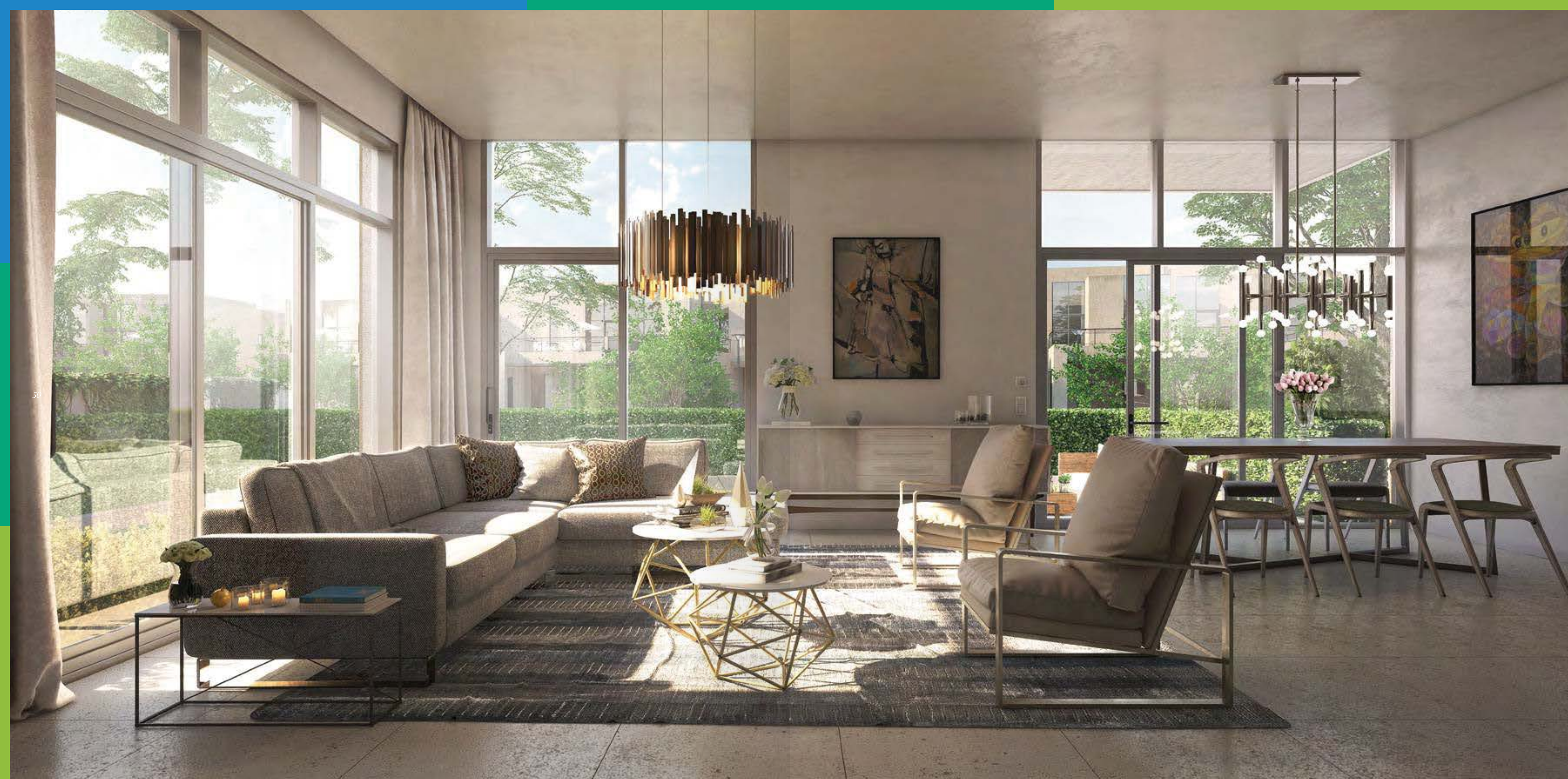
Tree-lined pavements bring beauty to streets, while carefully-considered ventilation and airflow brings calm and serenity to the mind. Of course, the wellbeing of its residents has been carefully considered from the blueprints of the project themselves. An inspired design maximizes the possibilities for discovery on foot. Walking is just one of the pleasures of living here.

Every home is built on the foundations of simplicity and sophistication. Attractively painted and eye-catching design give Cassia a unique flavor and sentiment. The linear interpretations on the buildings exudes both purpose and familiarity, lending itself perfectly to a community where one feels unmistakably at home.





Cassia is the ultimate example in stylish urban living. Top-to-bottom glass windows give an air of elegance, complementing the refined facades. These meticulously designed residences are unique works of contemporary architecture, both outside and in.



GRACEFUL DESIGN DETAILS.

Featuring bespoke fittings and fixtures made to match personal tastes and styles, these are luxurious homes for its residents.



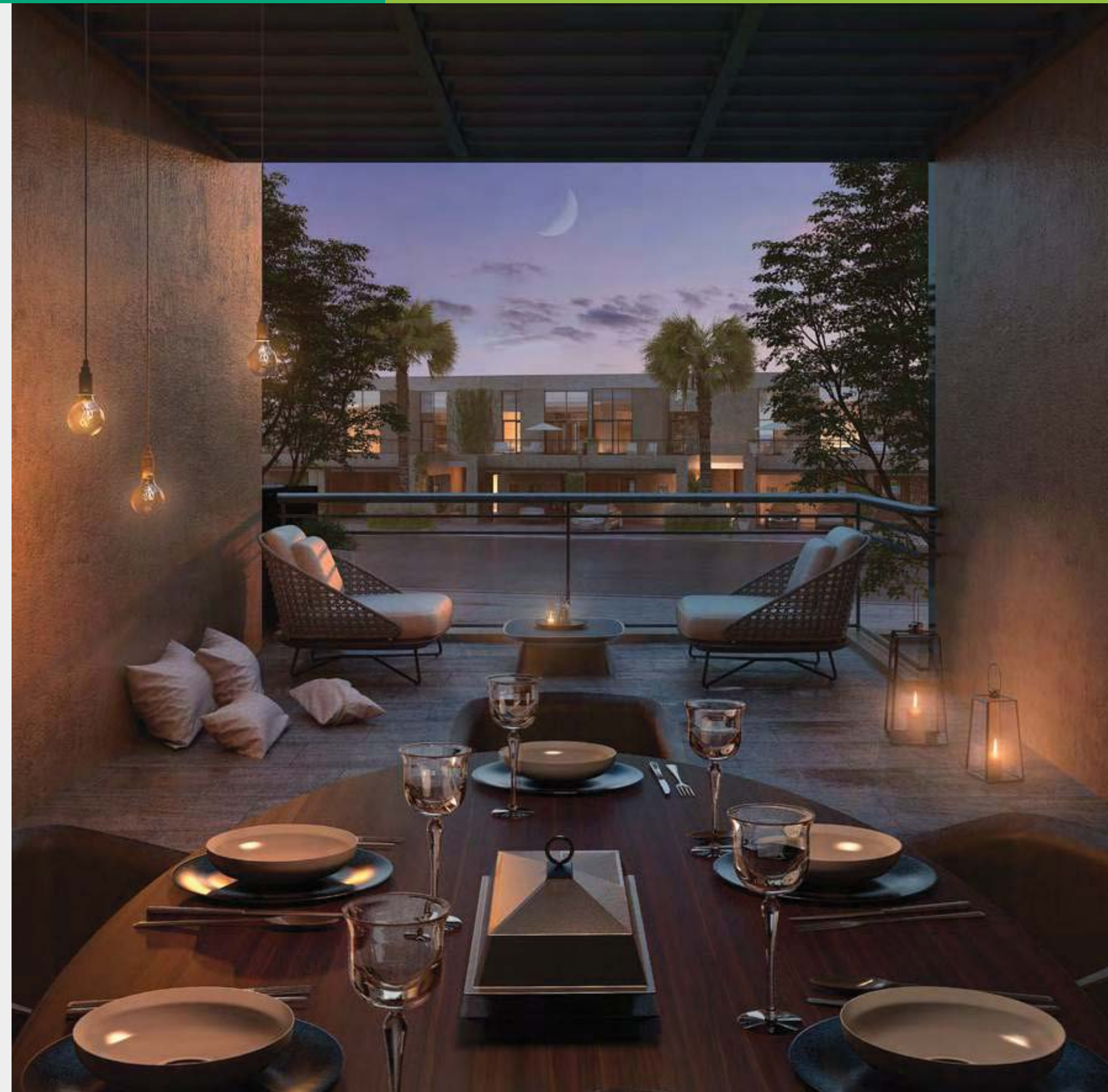
MARVEL AT WHAT'S INSIDE.

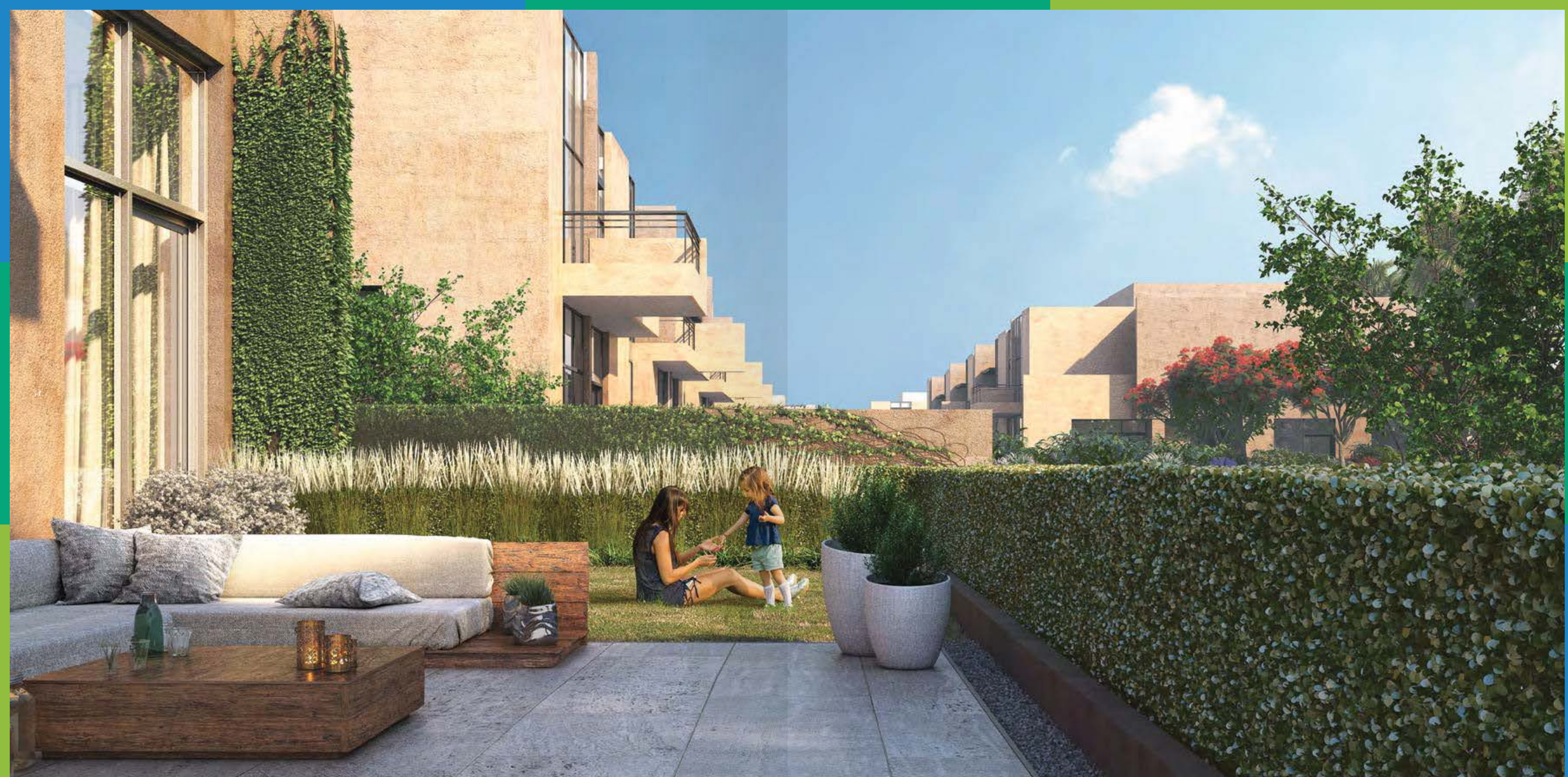
52

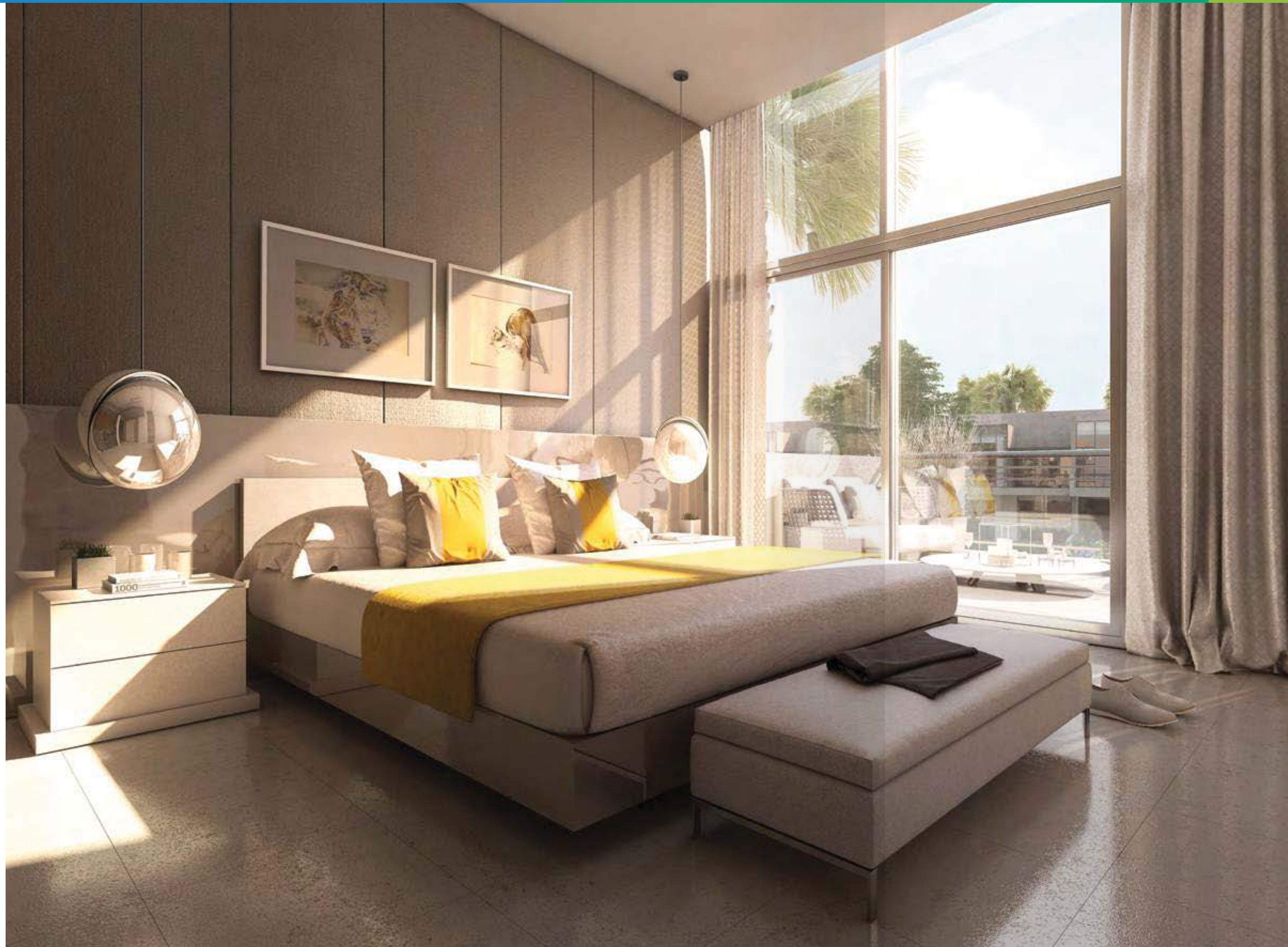
INTERIORS THAT COMPLEMENT
THEIR SURROUNDINGS, NATURALLY.



A top-of-the-line chef's kitchen is graced with premium finishes to match the stunning interiors. Sound-proof glass doors and windows showcase stunning views, while opening up the residences to natural sunlight and plenty of fresh air – intrinsic to maintaining a healthy body and mind.







Bright, high-ceilinged rooms create harmonious interiors that blend into the natural surroundings of the sub-community outside. Spacious and carefully curated inside, residents can also enjoy sweeping views of breath-taking parklands from private balconies and terraces.



FLOORPLANS

Disclaimer
1. All room dimensions are measured to structural elements and exclude wall finishes and construction tolerances 2. All dimensions have been provided by our consultant architects. 3. All materials, dimensions & drawing are approximate. Information is subject to change without notice. 4. Actual suite area may vary from the stated area. Drawings not to scale. The developers reserve the right to make revisions. 5. Calculation of suite area is measured as the area bounded by the centre line of demising or partition walls separating one unit from another unit, the exterior face of all exterior walls, and the exterior face of the corridor wall enclosing the joining unit. 6. Calculation of balcony area is measured as the are bounded by the centre line of demising or partition walls separating one unit from another unit, the outmost face of the enclosing guard and the external face of the unit adjoining balcony. 7. The units are measured at typical floor in the townhouse. Columns may vary in size depending on the floor level. Interior furnishing, Kitchen appliances and bath fixtures are indicative and large net area may vary.



TYPE C1

4 BEDROOM
TOWNHOUSE /
2,787 SQ.FT.

GROUND FLOOR

DOUBLE GARAGE.
AUTOMATED GARAGE DOOR.
PRIVATE PATIO & GARDEN.
ENSUITE BATHROOM.
MAID'S ROOM.



TYPE C1

4 BEDROOM
TOWNHOUSE /
2,787 SQ.FT.

FIRST FLOOR

FAMILY ROOM.
PRIVATE TERRACES.



TYPE C2

4 BEDROOM
TOWNHOUSE /
3,195 SQ.FT.

GROUND FLOOR

DOUBLE GARAGE.
AUTOMATED GARAGE DOOR.
PRIVATE PATIO & GARDEN.
ENSUITE BATHROOM.
MAID'S ROOM.



TYPE C2

4 BEDROOM
TOWNHOUSE /
3,195 SQ.FT.

FIRST FLOOR

FAMILY ROOM.
ENSUITE BATHROOMS.
PRIVATE TERRACES.





Developer

A HIGHLY EXPERIENCED BOUTIQUE REAL ESTATE DEVELOPER.

WITH MORE THAN 20 YEARS OF
EXPERIENCE IN THE CONSTRUCTION
INDUSTRY, G&CO HAS BUILT UP A
UNIQUE PLATFORM ON WHICH TO
SUPPORT ITS CUSTOMERS WITH A
VAST RANGE OF SERVICES.

G&Co stands for capability, quality and
partnership. Their award-winning portfolio
includes successful projects such as Millennium
Estates and Grand Views at Meydan. Proud to
redefine the notion of excellence with luxury
communities that surpass every expectation,
G&Co were the obvious choice to develop
District 11 at MBR City.



Master Developer

A VISIONARY CONCEPT OF H.H SHEIKH MOHAMMED BIN RASHID AL MAKTOUM.

Meydan Group aims to link the world with
the Emirate of Dubai through international
horse racing and equestrian events, a range of
commercial developments, hospitality, sports,
entertainment and amusement services, a series
of state-of-the-art business parks, residential
villa communities, schools, hospitals, business
towers with luxury waterfront developments and
shopping destinations.



Escrow

AN UNLIMITED PERSPECTIVE. THAT'S WHAT BANK OF SHARJAH OFFERS.

Bank of Sharjah is a leading provider of
commercial, retail and investment banking
solutions in the UAE aimed at becoming a major
financial institution in the Middle-East. The Bank
is committed to its personnel and clientele to
accompany them in realizing their aspirations and
objectives. Performance, ethics, transparency,
initiative, commitment and quality are imprinted
in the way we do business and how we
contribute to society and the environment.

*For More information Call us +971 4 248 3400 Or Visit Us
<https://www.tanamiproperties.com/Projects/Cassia-at-the-Fields>*

CASSIA

THE FIELDS

MOHAMMED BIN RASHID
AL MAKTOUM CITY

FOR MORE INFORMATION PLEASE CONTACT

AFS
REAL ESTATE

STAY AHEAD, INVEST SMART

☎ +971 55 476 7630
☎ +971 4 368 7878
✉ info@afsrealestate.com
🌐 www.afsrealestate.com

db

DUBRICKS

POSSIBILITIES ARE LIMITLESS

☎ +971 50 674 2020
☎ +971 4 368 7878
✉ info@dubricks.com
🌐 www.dubricks.com